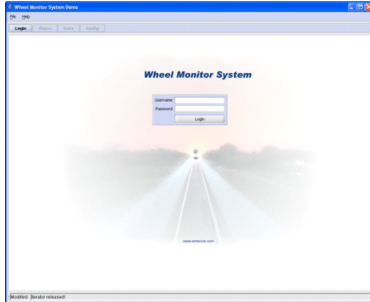
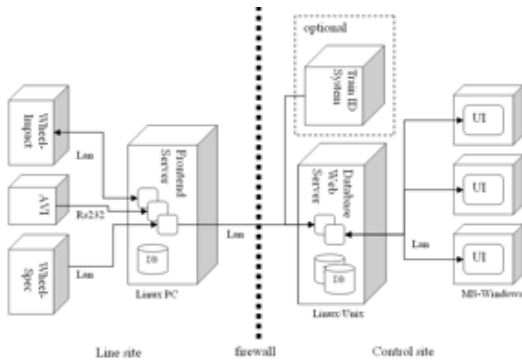


### Wheel Monitor System



Data from the measurement systems and from an optional tag reader are stored locally on the frontend server in an Oracle database. Finally data must be copied to the database server for long-term storage and for serving user interfaces. Data are mapped to trains and wheels on the database server using tag readings (or other train identification methods provided that the wheel position can be identified).



The client User Interface (UI) application is implemented in Java and can as such run on MS-Windows, Linux or other operating systems. The UI has the following characteristics:

- Downloaded from server to client PC via web-interface and Java web-start. This makes it very easy to manage versions of UI on several client PCs.
- User authentication and user roles
- Access security based on user role
- User defined configuration
- Alarm display with configurable alarm levels
- List of trains and their associated data
- List of wheels and their associated data
- Data reports as ms-excel, ms-word, CSV, html or pdf.
- Generic search engine for data mining. Search criteria stored per user.
- Wheel maintenance record can be inserted and will appear on graphs and in reports.
- Graphical trending of measurement channels per wheel
- Graphs support zooming, panning, printing, saving
- Highly configurable UI



**WMS**